

2nd Stakeholders meeting

Presentation of the project

Bruno Guillaumie, coordinator



Story



- KBBE call 2012-6: summer 2011
- Application: 10/11/2011
- Selection: 22/02/2012
- Negotiation: 01/03 ->26/06/2012
- Grant agreement: 20/09/2012
- Period: 01/10/2012 -> 30/03/2014 (18 months)
- First AFLCC meeting: 10/10/2012
- First Stakeholders meeting: 27-28/11/2012
- Regional workshops (IT, ES, FR, IE, NL): 02->09/2013
- **Second Stakeholder meeting: 15-16/01/2014**



Question & subject

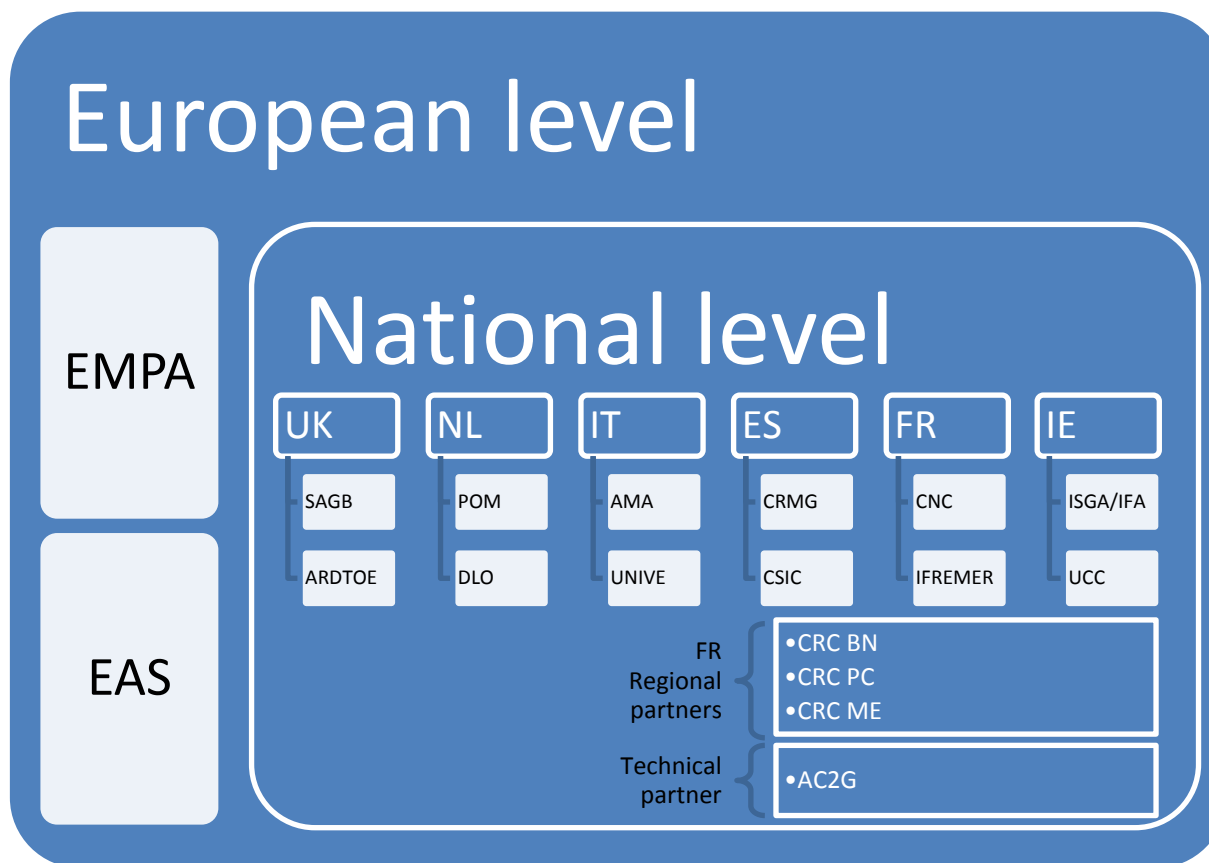


- How to bridge the gap between science and producers to support the European marine mollusc production sector
- Linked to:
 - EU aquaculture strategy (EC, 2009)
 - More competitive, strong support for R&D, better spatial planning
 - Sustainable
 - Improving governance
 - EFF priority axis 4 (FLAGs, 2007-2013)
 - Territorial approach
 - Mobilization of all actors together
 - Animation and networking (learning from each others)
 - EATiP initiative (project AQUAINNOVA, 2010-2012)
 - Vision for the sector
 - Strategic Research Agenda

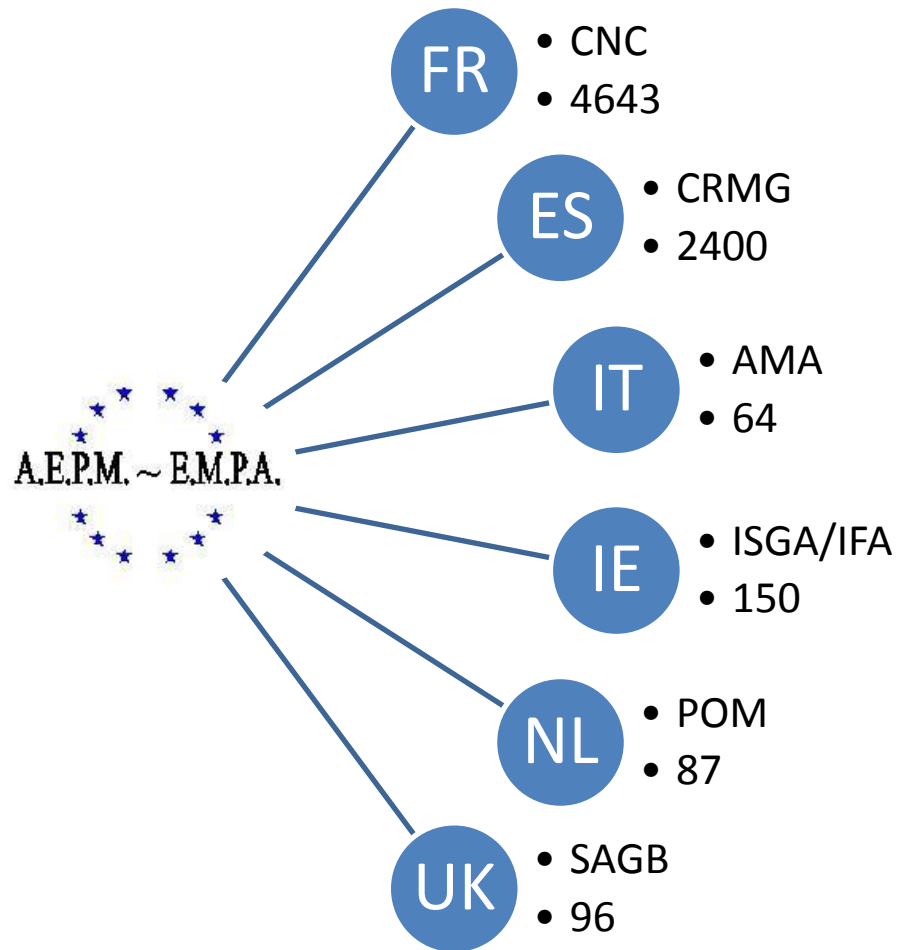


Consortium as a whole

Coordinator: CNCEuropean level



7740 SMEs (data 2011)



Core objectives



- **Enhance integration of knowledge** into the production cycle of the main farmed species, by assessing current critical problems experienced by the sector that have a direct link to research and reviewing current knowledge and especially the extent of its uptake.
- **Assess the current structural organization** that links knowledge to practice in key European production countries and identify solutions that will address structural difficulties (where these exist) for shellfish SME's to participate in RTDI initiatives.
- **Identify future visions for the European shellfish sector by industry** including the identification of gaps and research needs, so as to lay the basis for more effective methodology for future dialogue and integration of the sector into the EATIP.



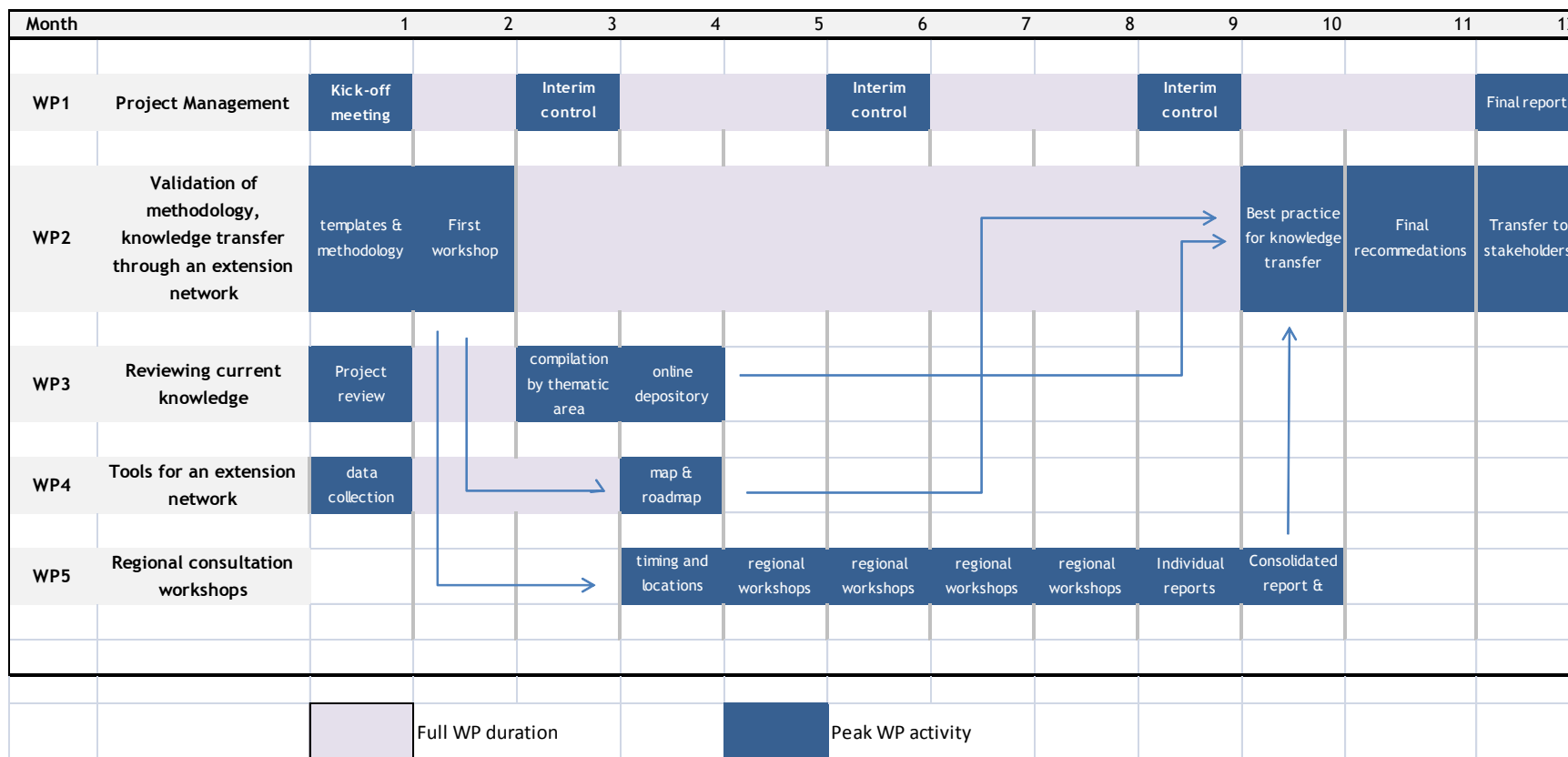
Method & hypothesis



- Method: Extension as a solution
 - Extension workers (profile, skill, training courses) = link between science & industry
 - Tools: vision/SRIA/AP as a graphical interactive tools (link to maps and knowledge database)
 - Network (best practices transfer, link with territories and actors)
- Hypothesis:
 - FLAGs as host
 - Extension eligible to EMFF as a new mission for FLAGs (EC guidelines for strategic plans? MS operational programs?)



Organization & works





Bruno Guillaumie

Thank you for your attention

